



Welcome to HQconstruct where we specialize in providing top-of-the-line construction machineries and equipment to fuel your construction projects. With our cutting-edge machinery, we empower your construction dreams by providing reliable, efficient, and innovative solutions that meet the demands of modern construction. Our comprehensive range of construction machineries and equipment includes [list some examples of equipment, e.g. excavators, cranes, loaders, etc.], all backed by our expert team of technicians and outstanding customer support. From small-scale projects to large-scale developments, we are committed to being your trusted partner in equipping your construction site with the tools it needs to thrive. Discover the difference of working with us and let us help you build success, one project at a time.



Mixers

10/7 CFT Without Hopper Mixers (200 Ltr.)

Technical Specifications

	Unit	10/7 CFT Without Hopper
Drum Capacity	Cuble feet / Liters	10/300 Liters
Mixed	Cubic feet / Liters	7/200 Liters
Drum Speed	RPM	18
Prime Mover	Diesel Engine, Electric Motor	6 Hp Air Cooled, 5 Hp. 3 Ph.
Antivibration Pad	No's	Optional
Transportation	Pneumatic Wheels	4
Skip Oeration	N/A	N/A
Drum	Mild Steel or Casting	
Yoke	Mild Steel of Casting	MS/Costing
Wire Rope Drum	Mild Steel of Casting	N/A
Wire Rope Drum	LXWXH in Meters	2.9 x 2 x 1.5



10/7 CFT Mechanical Mixers (200 Ltr.)



Technical Specifications

	Casting Type	M.S. Type
Type	Tilting Type	Tilting Type
Drum Capacity	Unmixed 10 cft. Mixed 7 cft.	Unmixed 10 cft. Mixed 7 cft.
Drum Speed	18 RPM	18 RPM
Concrete Mixing Time	180 Seconds approximate	180 Seconds approximate
Prime Mover	6 H.P. Air cooled diesel engine or 5 H.P. 3 phase electric motor	6 H.P. Air cooled diesel engine or 5 H.P. 3 phase electric motor
Overall Dimensions	L-3400 x W-2800 x H-3500 mm	L-2900 x W-2200 x H-2700 mm
(Antivibratio Pad)	Yes	Yes
Transportation	Pneumatic wheels	Pneumatic wheels
Mechanical	Clutch Drive	Clutch Drive
Drum	Casting Material	M.S. Material
Yoke	Casting Material	M.S. Material
Wripe Rope Drum	Casting Material	M.S. Material
Dimensions	L-2900 x W-2000 x H-2600	L-2900 x W-2000 x H-2600

10/7 CFT Hydraulic Mixers (200 Ltr.)

with casting body-C.B.-10/7 CFT
Sheet Metal - S.M. - 10/7 CFT



Technical Specifications

	Casting Type	M.S. Type
Type	Tilting Type	Tilting Type
Drum Capacity	Unmixed 10 cft. Mixed 7 cft.	Unmixed 10 cft. Mixed 7 cft.
Drum Speed	18 RPM	18 RPM
Concrete Mixing Time	180 Seconds approximate	180 Seconds approximate
Prime Mover	6 H.P. Air cooled diesel engine or 5 H.P. 3 phase electric motor	6 H.P. Air cooled diesel engine or 5 H.P. 3 phase electric motor
Overall Dimensions	L-3400 x W-2800 x H-3500 mm	L-2900 x W-2200 x H-2700 mm
(Antivibratio Pad)	Yes	Yes
Transportation	Pneumatic or M.S. Wheel	Pneumatic or M.S. Wheel
Skip	Hydraulic	Hydraulic
Drum	Casting Material	M.S. Material
Yoke	Casting Material	M.S. Material
Wripe Rope Drum	Casting Material	M.S. Material
Dimensions	L-2900 x W-2000 x H-2600	L-2900 x W-2000 x H-2600

Reversible Drum Mixer



Adding a Cosmos reversible mixer or mobile mini batching plant to your fleet of construction equipment is sure to take you forward in business. Its heavy-duty robust design, powerful motor and high durability roller make your work more efficient and more cost-effective. Taking you ahead of the competition!

Features

- Digital weighing system
- Centralized lubrication system (Optional)
- Frame and chassis in tube structure
- Robust and longer life
- Extremely low maintenance
- Efficient design
- Foot-cum-flange 10 HP x 960 RPM motor
- Direct drive hydraulic pump
- Steel casting rollers
- Single stage reduction of drive
- Mild steel casting rollers
- Direct drive motor
- Optional - Printing system, sound / light indication

Reversible Drum Mixer



Technical Specifications

Specifications	Unit	CRM 600	CRM 800	CRM 1050	CRM 1400
Output	Cubic meter/hr	8	12	15	20
Electric Motor	H.P.	7.5	10	15	20
Capacity Unmixed	Liters	600	800	1050	1400
Capacity Mixed	Liters	400	600	800	1000
Drum Dia.	Millimeters	1300	1300	1600	1600
Drum Length	Millimeter	1830	2000	2200	2680
Drum Rotation Speed	RPM	19	19	19	19
Mixing Blade	No's	8	8	8	8
Frame & Chassis	Mild Steel	ISMC	Tube	Tube	Tube
Pneumatic Wheels	No's	4	4	4	4
Loading	Hydraulic	*	*	*	*
Weighing System Load Cell	No's	3	3	3	3
Hydraulic Fluid	68 grade	*	*	*	*
Hydraulic Tank	Liters	60	60	60	60
Hydraulic Pump	Pressure Bar	207	207	207	207
Water Dispenser	Electronic	*	*	*	*
Machine Legs	Mild Steel BoxSection	4	4	6	6
Drum Guide Roller Mild Steel	No's	3	3	5	5
Dimensions	L x W x H in Meters	4.2 x 2.1 x 2.7	4.94 x 2.1 x 2.7	5.5 x 2.2 x 3.1	5.5 x 2.2 x 3.1

* = p available

Compact Reversible Batching Plant

Item	Specification
Plant Capacity	20 To 25 M 3
Over All Size Of Plant (After Errection)	9400 X 4800 X 3900
Mixer	Twin Shaft
Mixer Out Put Per Batch	0.5 M 3
Mixing Cycle Time	Approx 80 Seconds
Mixer Liner / Drum Sheet Life	40,000 M 3 Concrete
Mixer Transmission	Through Gear Box
Bunkker	4 Bin Metal 1 & 2, 3 m³ each Sand 1 & 2 1.5 M³ each
Water Weighing Tank	0.18 M 3
Cement Weighing Tank	0.4 M3
Add Mix Jar	4 Lit Capacity
Weighing Conveyor Belt	800 mm Wide 3 Ply 10 mm Thk (Make - Polyfenner)
Air Compressor	225 Lit Tank Capacity (Make- Fscurtis)
Cement Screw Conv.	168 Dia , 5 Mtr (Make - Wam India)
Flyash Screw Conv.(Optional)	219 Dia , 5 Mtr (Make - Wam India)
Mixer Motor	25 Hp (Make - Cromton)
Weighing Conveyor Motor	Break Motor 10 Hp (Make - Mgm Varvel)
Air Compressor Motor	5 Hp (Make - Cromton)
Water Pulp	1 Hp (Make - Cromton)
Addmix Pump	½ Hp (Make - Cromton)
Cement Screw Conv. Motor	5 Hp (Make - Wam India)
Flyash Screw Conv. Motor	7.5hp (Make - Wam India)
Bin Vibrator - 2 Nos	¼hp (Make - Wam India)
Penumatic Vibrator For Cemement Tank	P 25 (Make - Wam India)
Cement Cone Vibrator	¼ Hp (Make - Wam India)
Weighing Conveyor Load Cell	2000kg Capacity, S Type (Make - Sensor / Edit)
Water Tank Load Cell	300 Kg Capacity, Sandwich Type (Make - Sensor / Edit)
Cement Tank Load Cell	500 Kg Capacity, Sandwich (Make - Sensor / Edit)
Addmix Load Cell	50 Kg Capacity, Sandwich Type (Make - Sensotronics)
Control Panel	"plc Based (Make - Ids)plc - Simatic S7 200 (Simens)"
Penumatic Cylinder & Items	Make - Janatics
Printer	L x 300
Off Line Printing	Yes
Total Over All Hp	57 Hp (42 Kw)
Maxium Diameter Of Aggregates	(cobblestone/ Broken Stone) 60/40mm
Control System	Fully Automatic Plc Based Ids Technology Control Panel Board With N Numbers Of Recepies.



This machine is very compact. Hence gives better operating service. It is easier to carry the machine at various floors due to light in weight.

Features

- Stationary & Mobile Batching Plant
- Available in Auto, Semi-Auto, Manual Mode
- Highly Efficient & Robust

Inline Batching Plant with Twin Shaft

Inline Twin Shaft Homogeneous Mixing Concrete Batching Plant

Item	Specification
	30m3 Inline Batching Plant With Twin Shaft
Plant Capacity	30 M3
Mixer	Twin Shaft
Mixer Output Per Batch	0.5m3
Mixing Cycle Time	60 Sec
Mixer Liner/drum Sheet Life	40000 M3
Mixer Transmission	Through Gear Box
Bunker	4 Bin/6m3 Each
Water Weighing Tank	0.2m3
Cement Weighing Tank	0.4m3
Add Mix Weighing Jar	4 Ltr Capacity
Weighing Conveter Belt	800mm Wide 3ply 10 Mm Thk (Make Polyfenner)
Air Compressor	225 Ltr Capacity (Make - Fscurtis)
Cement Screw Conv	219 Mm Dia 12 Mtr Long (Make - Wam India)
Flash Acrew Conv (opetional L)	219 Mm Dia 12 Mtr Long (Make - Wam India)
Mixer Motor	25 Hp
Weighing Conveyor Motor	Break Motor 10 Hp (Make - Mgm Marvel)
Skip Motor	10 Hp
Air Compressor Motor	5 Hp
Water Pump	2 Hp
Addmix Pump	1 Hp
Cement Screw Conv. Motor	12.5 Hp
Flash Acrew Conv. Motor (opetionall)	15 Hp
Bin Vibrator 1 No.	0.25 Hp
Pneumatic Vibrator For Cement Weighing Tank	P 25 (Make Wam India)
Cement Cone Vibrator	0.25 Hp
Weighing Conveyor Load Cell	2000 Kg Capicity, S Type (Make - Sensor / Edit)
Water Tank Load Cell	300 Kg Capacity, Sandwitch Type(Make - Sensor / Edit)
Cement Tank Load Cell	500 Kg Capacity, Sandwitch Type(Make - Sensor / Edit)
Addmix Load Cell	50 Kg Capacity, Sandwitch Type(Make - Sensotronics)
Control Panel	Plc Based Ids Technology Control Panel With 'n' Number Of Receipies
Scada System	Optional
Penumatic Cylinder & Items	Janatics Make
Printer	Lx 300
Off Line Printing	Yes
Total Over All Hp	Appx. 79 Hp



Also Available with Silo

Hydraulic Bar Cutting Machine



Features

- Capacity : 32 mm Dia tor steel
- Main body is made out of casting
- Well lubricated heavy duty gears used for smooth functioning
- Clutch system is provided for safety purpose
- Blade can be easily replacement
- No skilled required
- Save time and money

Technical Specifications

	32mm Hydraculic	42 mm Hydraculic
Shearing Capacity	32 mm	42 mm
Size	L-900 mm	L-1100 mm
	W-650 mm	W-850 mm
	H-1100 mm	H-1300 mm
Prime Mover	3 H.P 3 Phase Motor	5 H.P 3 Phase Motor

Mechanical Bar Cutting Machine



Features

- Capacity : 32 mm Dia tor steel
- Main body is made out of casting
- Well lubricated heavy duty gears used for smooth functioning
- Clutch system is provided for safety purpose
- Blade can be easily replacement
- No skilled required
- Save time and money

Technical Specifications

	32mm Hydraculic
Shearing Capacity	32 mm
Size	L-1200 mm
	W-900 mm
	H-1000 mm
Prime Mover	3 H.P 3 Phase Motor

Hydraulic Bar Bending Machine

Features

- 5HP/ 3HP electric flange type motor
- Hydraulic rack and pinion cylinder for bending
- Directional solenoid valve with pressure relief valve
- Hydraulic gear pump submerged in hydraulic oil
- PLC operated with report printing function - optional
- longer blade life

Technical Specifications

	32mm Hydraculic	42 mm Hydraculic
Shearing Capacity	32 mm	42 mm
Size	L-1000 mm	L-1000 mm
	W-850 mm	W-850 mm
	H-900 mm	H-950 mm
Prime Mover	3 H.P 3 Phase Motor	5 H.P 3 Phase Motor
No. Dies	5 Nos.	5 Nos.



Bar bending and cutting are equally skilful and stressful activities. They are also two of the most repeated activities at construction sites. These powerful mechanical and hydraulic machines from Cosmos make these activities unbelievably effortless and efficient!

Sample shapes of cut and bent bars





The Aluminium Forwork System

Provides a “One-Stop” Solution for all your Construction Problems

Form work system duration which reduces overheads and financing costs. The system used less skilled labour : the dimensional accuracy minimizes material wastage and remedial works.

Cost Effective.
Flexible and Adaptable.
Speed and Accuracy.
Top Quality Finishing.



Aluminum Formwork System

What is Refurbishment ?



Process for Refurbishment

Drawing



Inspection



Chipping



Dipping



Cleaning

Levelling



Welding



Buffing



Coating



Mock-up

Accessories for Aluminum

Cosmos brings you the latest in form work to help improve your processes to be more profitable.

Wall Panel



Standard Panel

Width x Length (mm)

600 x 2300

600 x 2450

450 x 2300

450 x 2450

400 x 2300

400 x 2450

300 x 2300

300 x 2450

Slab Panel



Size

600 x 1200

450 x 1200

400 x 1200

300 x 1200

The Slab panel will be used to support the concrete weight during concrete pouring and casting

Beam Bottom Slab Panel

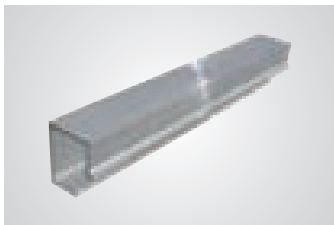


Size

Dependent upon beam size

Soffit Panel will be used to cover the bottom of the beam

Slab Corner

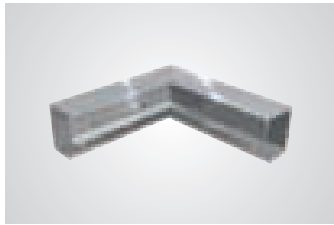


Size

150H

Connection between Wall panel & Slab panel

Slab Incorner

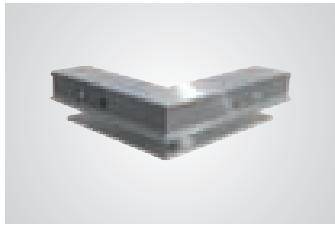


Size

Dependent upon beam size

Connection between Wall panel & Slab panel (inside)

Slab Incorner

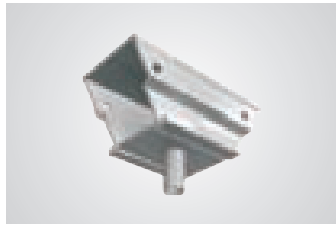


Size

Dependent upon beam size

Connection between Wall panel & Slab panel (outside)

Prop Head [PH]



Size

150 x 300

Used to joint the beams together (Middle beam and/or End beam), the pipe support will be placed under the prop head

Middle Beam [MB]



Size

150 x 900

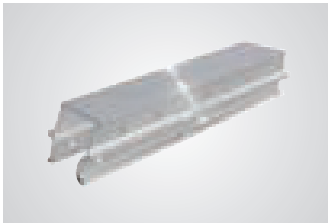
150 x 1050

Used to joint the prop heads, the middle beam supports the slab panels

Accessories for Aluminum

Cosmos brings you the latest in form work to help improve your processes to be more profitable.

End Beam [EB]



Size

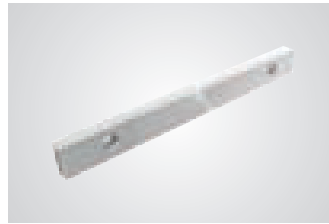
150 x 600

150 x 900

150 x 1050

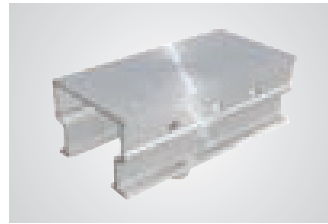
Used to joint the prop head and slab corner, the end beam supports the slab panels

Joint Bar



Used to joint the prop heads with the beams (Middle beam and/or End beam)

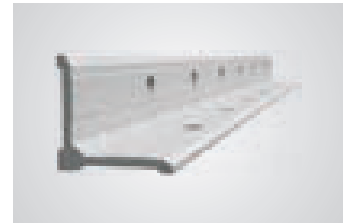
Special Prop Head



Size : Dependent upon beam size

Used to joint the beams together (Middle beam and/or End beam), this special prop head will be placed where a normal prop head cannot be installed

Corner Angle

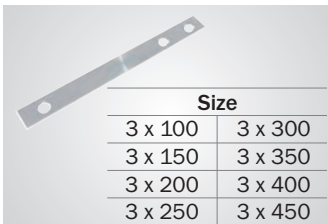


Size

63.5 x 63.5

Used to join panels together around the corners

Flat Tie

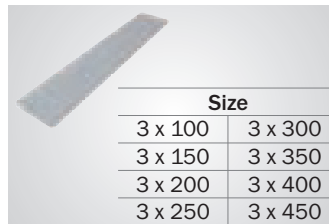


Size

3 x 100	3 x 300
3 x 150	3 x 350
3 x 200	3 x 400
3 x 250	3 x 450

The Flat tie is used to joint the wall panel to the opposite side's wall panel. Depending on the wall panel's height, the number of flat tie used will vary.

PVC Sleeve



Size

3 x 100	3 x 300
3 x 150	3 x 350
3 x 200	3 x 400
3 x 250	3 x 450

Made of PVC material, the PVC sleeve will be installed between the Wall panel and the opposite side's wall panel. The flat tie will be inserted inside this item in order to protect the flat tie to be casted within the concrete.

Slab Box



Size

L 8.5 x W350 x H 330

Pipe Support



Type	Length (mm)
V-1	1,800 ~ 3,200
V-2	2,000 ~ 3,400
V-3	2,400 ~ 3,800
V-4	2,600 ~ 4,000

The pipe support is used to support the weight of the slab during concrete pouring and casting. It will remain under the prop head until 2 levels of casting.

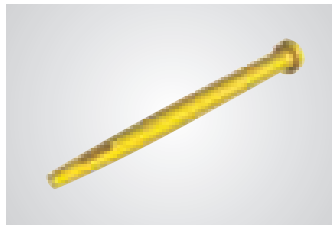
Accessories for Aluminum

Wedge & Round Pin



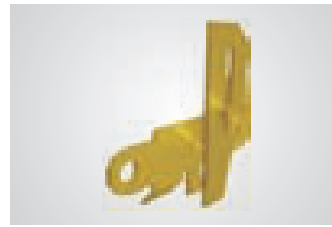
The Round pin and Wedge pin will be used to joint the Wall or Slab panels together.

Long Pin



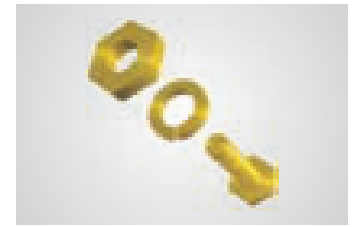
The Long pin and Wedge pin will be used to fix the Joint pin with the prop head and beams (Middle beam or End beam) together.

Waller-bracket & Square Pipe



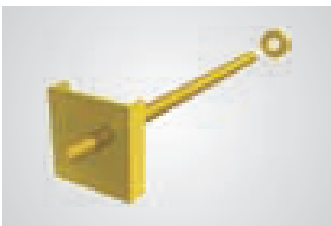
The Waller-bracket and Square pipe are used to allow the horizontal straightness of wall panels and a flat wall surface (especially at the bottom) after concrete casting.

Bolt, Nut & Washer



This set of accessories will be used as an embedded anchor in order to fix panels on the concrete surface during its installation.

Tie Rod



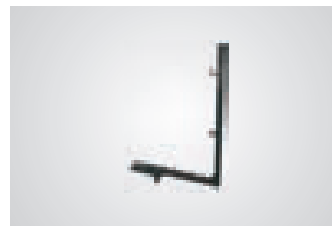
This accessory will be used as an embedded anchor in order to fix the Bracket on the concrete surface during its installation.

Wall Platform

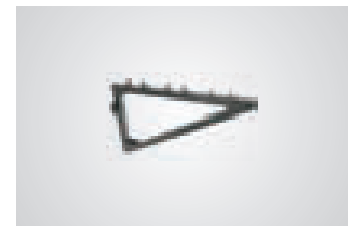


As a substitute of a scaffolding system, these wall platform, slab platform and elevator platform will be fixed on the concrete. [Wall/Slab/Elevator] and used as working platform for workers.

Slab Platform



Elevator Platform

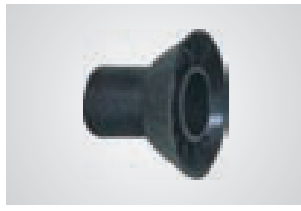


Accessories for Aluminum

Tie Rod 16mm Ø



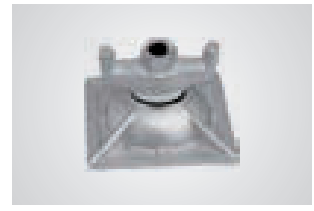
Kicker Cone



Wing Nut & Anchor Nut



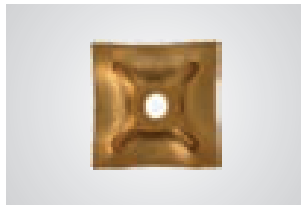
Anchor - Plate - With - Nut



Fixed & Swivel Coupler



Washer - Plate



Tie - Rod - Connector



Water Barrier



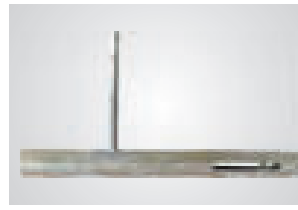
Water-stopper



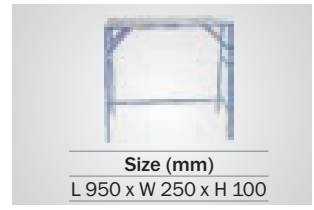
Pannal Puller



Wall tai Puller



Working Table





**Empowering Your Construction Dreams
with Cutting-Edge Machinery**

**Lokupvan Phase-II
Website-www.hexiqonsolutions.in
Email- hexiqonsolutions@gmail.com,
hexiqonconstruct@gmail.com
Contact No - +91 86552 24990, +91 73036 93069**